



STORM DOORS



STORM
DOORS



STORM DOOR FEATURES

ON THE COVER

Deluxe™ 397 Full View storm door in Sandstone with Camden hardware in Black

- A** Smooth function is essential. That's why we include a quality door closer in every storm door package. Varies by model. Our air release system features a continuous closing action without the delayed rebound action of previous generation closers.
- B** Extruded aluminum frame adds beauty to your door by virtue of the rounded cove molding along the glass edge of the extrusion.
- C** All our storm doors are constructed with tempered safety glass.
- D** Color matched aluminum installation screw covers ensure a finished look.
- E** Non-operable sashes are secured by our color matched polycarbonate clips or an internal sash lock system. Varies by model.
- F** Each door features quality hardware that adds beauty and functionality to your new storm door. Varies by model.
- G** Durable, oven-baked polyester finishes are backed by a Lifetime Warranty for lasting beauty and low maintenance.
- H** Corrosion-proof corner gussets enhance the structural integrity of the door.
- I** Our bottom expander with sweep allows for a beautiful custom-fit to any entry. Varies by model.



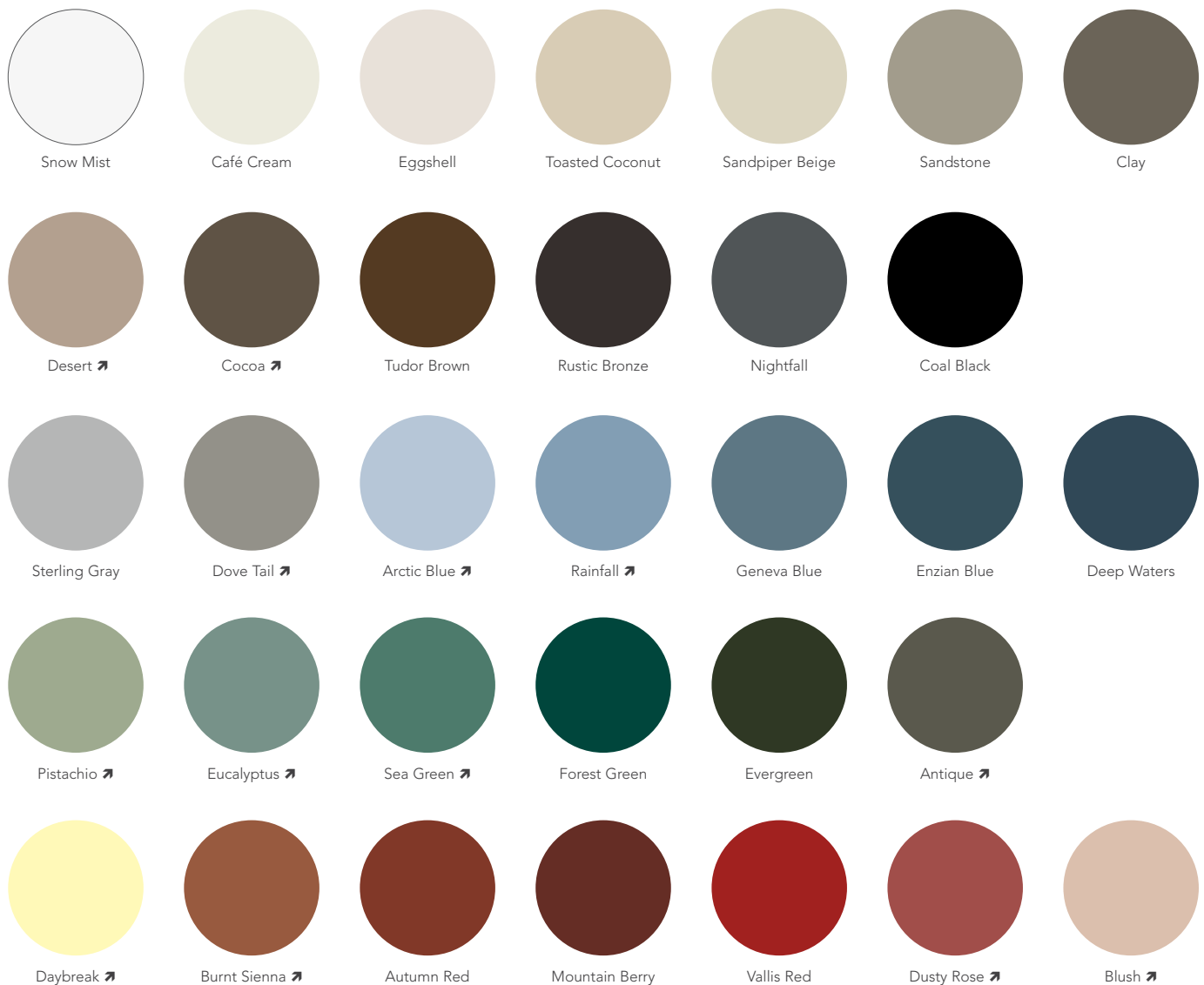
STORM DOOR FINISHES

Every ProVia® storm door is individually customized to the highest standards in the residential market for homeowners who appreciate impeccable, uncompromising quality.

PAINT FINISHING SYSTEM

Our paint process is computer controlled, ensuring professional quality every time. Paint is electrostatically applied with a vertical hydraulic reciprocator using a turbo disc that atomizes the paint particles for better coverage of contoured extrusions.

PAINT COLORS



🎨 Denotes Trending Color

Always refer to our color selector for accurate color representation.

LIFETIME FINISH WARRANTY

For all Storm Doors

STORM DOOR FEATURES

TOP STORM DOOR FEATURES

- ✓ Custom sizing availability
- ✓ Can be keyed to match entry door
- ✓ Optional double mortise hardware
- ✓ Custom door configuration ability
- ✓ Ability to match paint color to your ProVia® entry door

SASH/SCREEN CONFIGURATIONS

INVENT™ RETRACTABLE SCREENS:

- The screens are housed inside the door frame and affixed to the sash rails. Moving the sashes up and down will reveal the screen for ventilation.
- Only available on **Spectrum™** storm doors.

STATIONARY SASH/SCREEN:

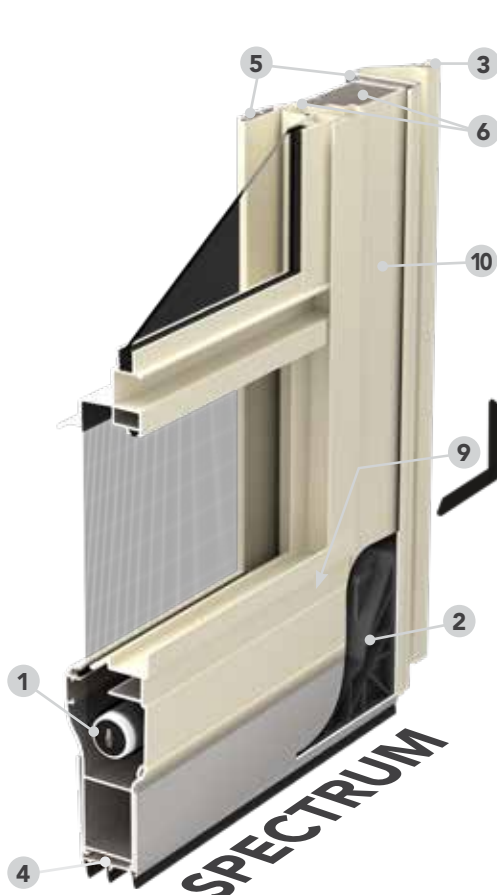
- Either a sash or screen may be ordered to be used interchangeably.
- Sash clips or internal cam locks are built into the storm door to lock the sash or screen in place and keep them secure (see *sash clip/internal cam lock call-out on page 2*).
- Available in all **Decorator™** models and select **Deluxe™** and **Superview™** models.

DURAGUARD™ SCREENS:

- This specialty storm door features a stainless steel screen that cannot be removed from the frame.
- In select models, a removable sash can be added to fit over the fixed screen when ventilation is not necessary.

SELF-STORING SASH/SCREEN:

- The sashes and screen operate on separate tracks in the storm door to allow ventilation, while eliminating the need for seasonal removal and storage.
- **Deluxe** self-storing models include a full screen and **Superview** self-storing models include a bottom screen.

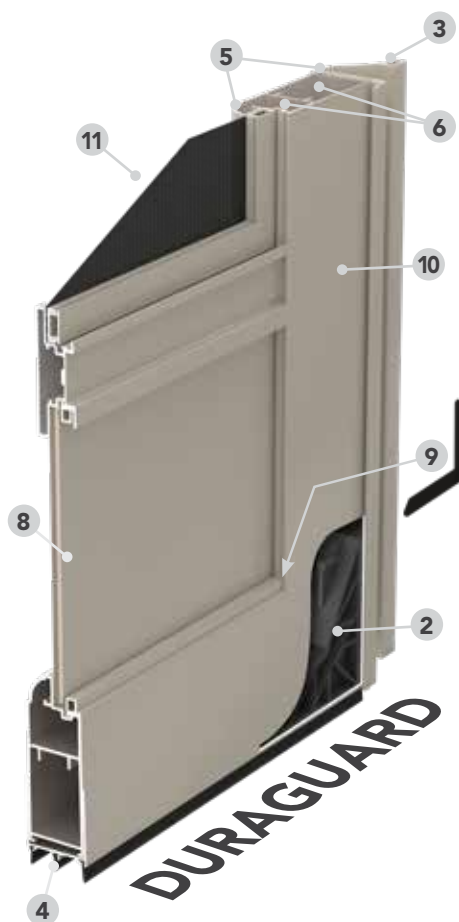
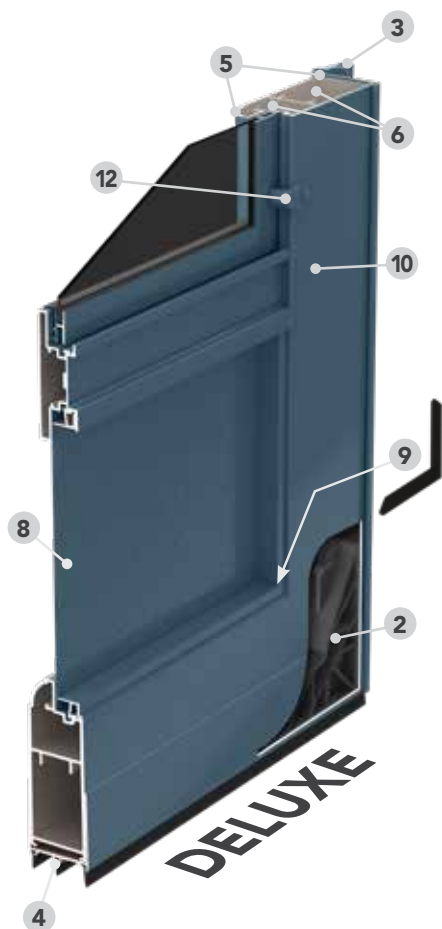


Internal Sash Lock System

This spring-loaded, flush mounted lock secures the glass, virtually eliminating rattles and air leaks.

CONSTRUCTION

	Spectrum™	Decorator™	Deluxe™	DuraGuard™	Superview™
1 InVent retractable screen system	•				
2 Outside corners are secured to corrosion-proof gussets for structural integrity	•	•	•	•	•
3 Color matched aluminum installation screw covers enhance the appearance of your door	•	•	•	•	•
4 Triple bottom sweep enhances draft protection (Up to three-sweep seal. Engagement varies by threshold depth and installation)	•	•	•	•	•
5 The sculptured frame adds durability	1¼" x 4¾"	1¼" x 4"	1¼" x 3¾"	1¼" x 3¾"	1¼" x 2¾"
6 Multi-hollow construction provides greater strength and security than standard storm doors	•	•	•	•	
7 The reinforced aluminum kick panel adds durability	•		•	•	
8 The aluminum kick panel resists rust and adds strength	•		•	•	•
9 Corner keys provide added support to the inside of the door frame	•	•	•	•	
10 Aluminum wall thickness up to 20% thicker than industry standard	•	•	•	•	
11 The .023 gauge stainless steel screen offers extra security and protection (12 x 12 mesh)				•	
12 Non-operable sash/screen secured by internal lock system or color matched polycarbonate clips		Internal Lock	Clips		Clips
13 Standard insulated frame core to help reduce air movement	Optional	•	Optional	Optional	
14 Screen included	•	Optional	•	•	•



Spectrum 291SH storm door in Coal Black with Camden Mortise hardware in Satin Nickel



SPECTRUM™ STORM DOORS

Spectrum storm doors bring you smooth functionality, beauty and durability. Our exclusive top and bottom InVent™ retractable screen system allows you more venting options than ever.

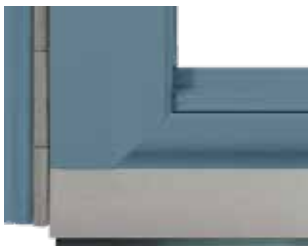
FEATURES

- Two InVent retractable screens
- Triple seal bottom sweep
- 1¼" x 4⅜" wide sculptured frame

STANDARD HARDWARE & ACCESSORIES



Satin Nickel Camden solid brass Mortise Hardware



Anodized Satin Nickel Piano Hinge and 1½" Satin Nickel Bottom Expander



Color-matched dual closers



**LIFETIME
LIMITED
WARRANTY**

Includes Glass Breakage

SASH ARROWS



Double Arrows:

Both sashes are operable



Single Arrow:

Single-hung, one sash is operable

Applies to pages 6, 10, 12, & 13

- Reinforced Aluminum Kick Panel
- Dent-Resistant Aluminum Kick Panel
- Available in 8' height
- Art Glass Available

* When top sash opens, it passes in front of kick panel.



For French Storm Door information refer to entryLINK.

Acrylic is required (instead of tempered glass) for custom size storm doors where the sash size is greater than 20 square feet or the sash weight is greater than 36 pounds. entryLINK will automatically change the glass selection to acrylic based on these limits.

Note: The bottom expander on the Spectrum storm door is 2½" on the exterior and 1⅜" on the interior to accommodate the frame profile.

AVAILABLE STYLES



295 Full View Double Prairie with Beveled Glass



298-VG Three-Quarter View with Beveled Glass



291 Full View



298 Three-Quarter View



279-C Colonial Half-Lite



279 Flush Half-Lite



292 Provincial Half-Lite



293 Cross-buck Half-Lite



291SH Full View
(Only one InVent top screen and fixed bottom sash)



298SH Three-Quarter View
(Only one InVent top screen and fixed bottom sash)



274-CSH Colonial Half-Lite*
(Only one InVent top screen and fixed bottom sash)



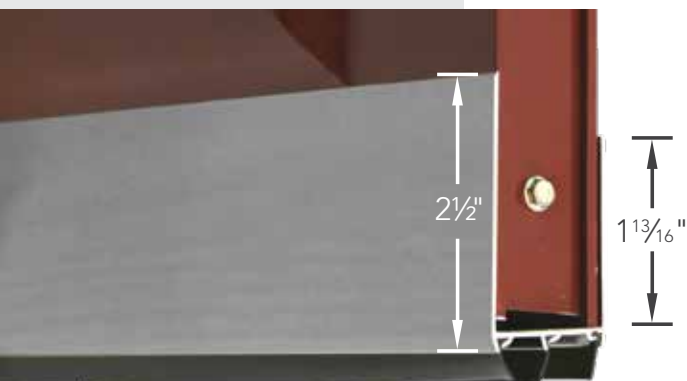
274SH Half-Lite*
(Only one InVent top screen and fixed bottom sash)

ART GLASS

See entryLINK for style availability.



298-AME Americana



Decorator 595 full view storm door in Rustic Bronze with Double Prairie Beveled Glass and Windsor hardware in Satin Nickel

DECORATOR™ STORM DOORS

Decorator storm doors provide a stylish, fresh look to accent your entry door. Select one of the distinct styles from our Decorator storm doors.

FEATURES

- Triple seal bottom sweep
- 1¼" x 4" wide sculptured frame

STANDARD HARDWARE & ACCESSORIES



Windsor Hardware in Bright Brass



Piano Hinge in Anodized Bright Brass and Color-Matched Bottom Expander



Color-matched dual closers



**LIFETIME
LIMITED
WARRANTY**

Includes Glass Breakage



This spring-loaded, flush mounted lock secures the glass, virtually eliminating rattles and air leaks. Only available in Zinc finish.

● Available in 8' height

Optional full screen with horizontal stabilizer bar available for all Decorator doors.



For French Storm Door information refer to entryLINK.

Acrylic is required (instead of tempered glass) for custom size storm doors where the sash size is greater than 20 square feet or the sash weigh is greater than 36 pounds. entryLINK will automatically change the glass selection to acrylic based on these limits.

AVAILABLE STYLES



591 Full View Archway with Beveled Glass



595 Full View Double Prairie with Beveled Glass



590 Full View



590-VIN Vintage

ART GLASS

See entryLINK for style availability.



Deluxe 397 full view storm door in Rustic Bronze with Sierra Multi-Point Mortise hardware in Aged Bronze

DELUXETM STORM DOORS

Deluxe storm doors are the answer whether you're looking for additional light, ventilation or protection from the elements. You'll find the exact style you're looking for in our Deluxe storm doors.

FEATURES

- Triple seal bottom sweep
- 1¼" x 3⅝" wide sculptured frame
- BetterVue® fiberglass screen

STANDARD HARDWARE & ACCESSORIES



Black Contemporary Curve lever hardware



4 Color-Matched Leaf Hinges with Bronze Bushings and Color-Matched Bottom Expander



Color-matched dual closers



**LIFETIME
LIMITED
WARRANTY**

Includes Glass Breakage

AVAILABLE STYLES



385 Full View Double
Prairie with Beveled Glass
Includes screen*



382 Full View with
Beveled Glass
Includes screen*



397 Full View
Includes screen*



391 Full View Divided Lite
Includes top screen*



396-V One-Lite with fixed
.023 gauge stainless steel
screen ventilated bottom
and removable sash
Includes top screen*



396 One-Lite
Includes screen*



399-M Modern
Self-Storing
Includes full screen*



399 Self-Storing
Includes full screen*



398-M Modern Hi-Lite
Includes top screen*



398 Hi-Lite
Includes top screen*



389-M Modern
Self-Storing
Includes full screen*



389 Self-Storing
Includes full screen*



379-C Colonial
Self-Storing
Includes full screen*



379 Self-Storing
Includes full screen*



392 Provincial
Self-Storing
Includes full screen*



394 Provincial
Includes screen*



393 Crossback
Self-Storing
Includes full screen*



395 Crossback
Includes screen*



374-C Colonial Half-Lite
Includes screen*



374 Flush Half-Lite
Includes screen*



397-VIN Vintage

**ART
GLASS**

See entryLINK for
style availability.



For French Storm Door
information refer to
entryLINK.

Acrylic is required (instead of tempered glass) for custom size storm doors where the sash size is greater than 20 square feet or the sash weigh is greater than 36 pounds. entryLINK will automatically change the glass selection to acrylic based on these limits.

* Full and One-Lite screens have horizontal stabilizer bar.

- Art Glass Available
- Reinforced Aluminum Kick Panel
- Dent-Resistant Aluminum Kick Panel
- Available in 8' height

DuraGuard 097 storm door in
Nightfall with Contemporary
Curve hardware in Black

DURAGUARD™ STORM DOORS

DuraGuard storm doors are exactly what you need if you're concerned about keeping your small children and pets safely inside. Select one of our doors with heavy-duty, non-removable stainless steel screening.

FEATURES

- Non-removable .023 stainless steel screen *(only available on DuraGuard models)*
- Triple seal bottom sweep
- 1¼" x 3⅝" wide sculptured frame

STANDARD HARDWARE & ACCESSORIES



Black Contemporary
Curve lever hardware



4 Color-Matched Leaf Hinges with
Bronze Bushings and Color-Matched
Bottom Expander



Color-matched dual closers



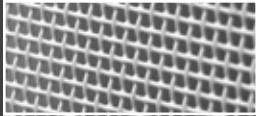
**LIFETIME
LIMITED
WARRANTY**

Includes Glass Breakage

SCREEN OPTIONS



Black .023 Stainless Steel
Standard



White .023 Stainless Steel



Note: White screen can appear to have different levels of transparency depending on the lighting and background.

- Reinforced Aluminum Kick Panel
- Dent-Resistant Aluminum Kick Panel
- Available in 8' height



For French Storm Door
information refer to
entryLINK.

Acrylic is required (instead of tempered glass) for custom size storm doors where the sash size is greater than 20 square feet or the sash weigh is greater than 36 pounds. entryLINK will automatically change the glass selection to acrylic based on these limits.

AVAILABLE STYLES



097 Screen Door
097-G with Removable
Glass Insert



096 Screen Door
096-G with Removable
Glass Insert



096-GV with Ventilated
Bottom and Removable
Top and Bottom Sashes



099 Self-Storing
Sash & Screen



099-M Modern
Self-Storing Sash
& Screen



089 Self-Storing
Sash & Screen



089-M Modern
Self-Storing Sash
& Screen



074 Flush Half Lite
Removable sash



074-C Colonial Half Lite
Removable sash



094 Provincial Half Lite
Removable sash



095 Crossbuck Half Lite
Removable sash



079 Self-Storing



079-C Colonial
Self-Storing



092 Provincial
Self-Storing



093 Crossbuck
Self-Storing

Superview 899 self-storing storm door in Snow Mist with a Pull Handle in Black

SUPERVIEW™ STORM DOORS

Superview storm doors offer a selection of doors constructed for style and value in one complete package.

FEATURES

- Triple seal bottom sweep
- 1¼" x 2⅝" wide sculptured frame
- BetterVue® fiberglass screen

STANDARD HARDWARE & ACCESSORIES



Black Pull handle
Also available in white

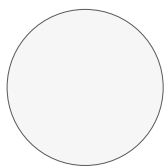


4 Color-Matched Leaf Hinges with
Bronze Bushings and Color-Matched
Bottom Expander



Single Black Closer
Also available in white

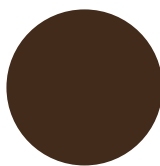
AVAILABLE COLORS



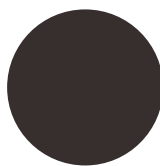
Snow Mist



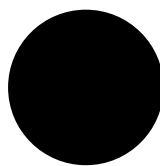
Café Cream



Tudor Brown



Rustic Bronze



Coal Black

Always refer to our color selector for accurate color representation.



897 Full View
Includes screen*



896 One-Lite
Includes screen*



898 Hi-Lite
Includes top screen



899 Self-Storing
Includes bottom screen



895 Crossbuck
Includes screen*



For French Storm Door
information refer to entryLINK.

* Full and One-Lite screens have horizontal stabilizer bar

MULTI-POINT MORTISE HARDWARE

Mortise hardware adds a special touch to your storm door with a solid brass handleset to suit your style. Our Multi-Point Mortise hardware conveniently allows you to use the same key for your storm door and your ProVia® entry door.

CAMDEN

Solid Brass Mortise



SIERRA

Solid Brass Mortise



VENICE

Solid Brass Mortise



Camden comes standard on Spectrum™ storm doors.

Multi-point mortise hardware is available on Spectrum, Decorator™, Deluxe™, and DuraGuard™ storm doors.



Mortise hardware features a multi-point locking system for added strength and security not found on typical consumer-grade storm door hardware.

Requires a factory handleset prep and is not available on expander doors and Superview storm doors.

AVAILABLE FINISHES

Bright Brass

Satin Brass

Antique Brass

Satin Nickel

Aged Bronze

Black

SINGLE-POINT MORTISE HARDWARE

WESTGATE



CAMBRIDGE



Single-point mortise hardware is available on Spectrum™, Decorator™, Deluxe™, and DuraGuard™ storm doors.



Optional Single-Point Mortise hardware, offering enhanced security, durability and style over standard surface-mounted hardware.

Not available to be keyed to entry door.

Requires a factory handleset prep and is not available on expander doors and Superview storm doors.

AVAILABLE FINISHES

White

Bright Brass

Antique Brass

Satin Nickel

Aged Bronze

Black

TRADITIONAL HARDWARE

WINDSOR



Standard on Decorator storm doors.
Not available on Superview™ model 899

CONTEMPORARY CURVE LEVER



Standard in Black on Deluxe and
DuraGuard storm doors.
Not available on Superview model 899

TOWNSEND



Not available on
Superview model 899



Only for Windsor,
Townsend and
Contemporary Curve
Interior handle finish
matches exterior handle

PUSH BUTTON

201



Available on Deluxe,
DuraGuard, and Superview
storm doors.

PULL HANDLE

182



Available on Superview
storm doors, standard
in Black.



AVAILABLE FINISHES

White

Bright Brass

Antique Brass

Satin Nickel

Aged Bronze

Black

ACCESSORIES & GLASS OPTIONS

All pet doors are factory installed and only available on storm doors with reinforced kickpanels.



Interior

Exterior

Standard option for Spectrum™ Storm Doors

DOOR SIZE	DIMENSIONS	PET WEIGHT
Small	6" x 10"	up to 20 lbs.
Medium	9" x 13"	up to 40 lbs.
Large	11" x 17"	up to 100 lbs.

RANGER® PET DOOR

Engineered from the best raw materials for a rugged, long-lasting door.

- **Cellular PVC Frame** – Strong, weatherproof, and mold-resistant, and 3,000X more insulating than metal frames.
- **Rugged Flap System** – The insulated flap system is made from premium materials for maximum energy-efficiency, pet safety, and durability. The flap has an insulating SBR rubber core, protected with marine-grade canvas on each side.
- **Locking Security Panel** – All door-mounted RANGER dog doors include a locking security panel.
- **DoubleMag™ Technology** for an airtight seal that keeps extreme weather outside.



COLORS

- Clear flap with white interior/exterior frame and a white locking panel on the interior (pictured to the left).
- Grey flap with black interior/exterior frame and a black locking panel on the interior.

See entryLINK for details



FREEDOM® PET DOOR

- Solid aluminum construction with locking panel
- Soft single flap for tight weather seal
- White mitered aluminum frame
- Only available with heavy-duty closers.

Pet Door N/A with dual closers

DOOR SIZE	DIMENSIONS	PET WEIGHT
Medium	8¼" x 12¼"	up to 40 lbs.
Large	10¼" x 16¼"	up to 100 lbs.
X-Large	13¾" x 23¾"	up to 220 lbs.



MAGAZINE & MAIL SLOT

Magazine and mail slots are available on storm door models: 074, 079, 279, 374 and 379 with reinforced, flush kickpanels.



Lifetime Bright Brass



Lifetime Aged Bronze



Lifetime Satin Nickel

◀ DuraGuard™ 079 Self-Storing with Mail Slot option

PIANO HINGE & BOTTOM EXPANDER



Anodized Brass



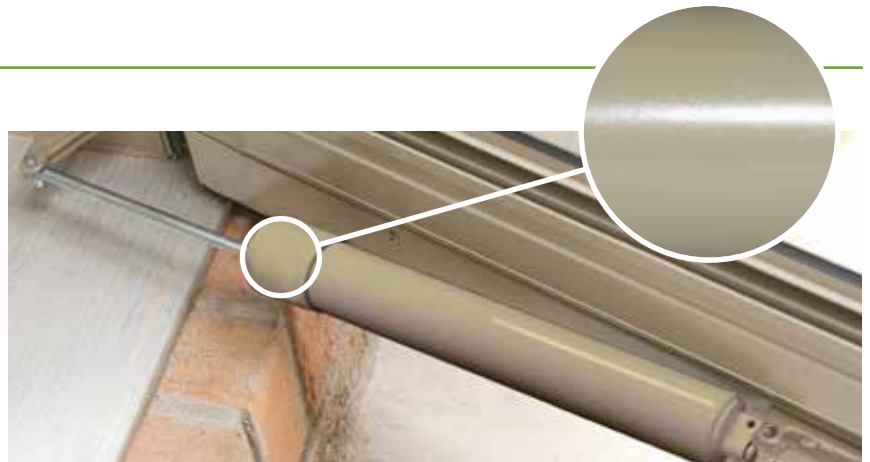
Satin Nickel



Aged Bronze

EASY-SET CLOSER

Our **air release system** features a continuous closing action without the delayed rebound action of previous generation closers. Just a slight push on the cap and it will stay open. Push door open further and it releases. Color matched to door.



PRIVACY GLASS

Choose from Gluechip or Obscure privacy glass if you need light to filter in, yet want to maintain privacy.



Gluechip



Obscure



BRONZE



GREEN



GRAY



BLUE

TINTED GLASS

Tinted glass can help reduce UV transmittance, solar heat gain and glare. Each tinted glass option provides a room a whole new look, providing its own unique set of benefits. Be sure to choose the right one for your home.

Disclaimer: Tinted glass images are shown against a white background to highlight the color. Actual appearance will vary based on factors such as the direction the glass is facing, surrounding light conditions, and whether it is shaded or exposed to direct sunlight.



"To serve, by caring for details in ways others won't." It's not just our mission, but a way of letting our light shine every day at ProVia®. We continually strive to put these words into action by providing unmatched quality and service. The P-icon symbolizes each employee's commitment to devoting the utmost care, pride and quality into each building product we manufacture...it's The Professional Way.



At ProVia, we manufacture energy efficient products and exercise corporate environmental stewardship by recycling, reducing pollution emissions and much more. In fact, our company has received repeated awards from the Environmental Protection Agency such as Partner of the Year - Sustained Excellence for Door and Window Manufacturing.



DOORS | WINDOWS
SIDING | STONE | ROOFING
provia.com

© 2026 ProVia
P-MK-00085-26 | 9/25

Distributed by: